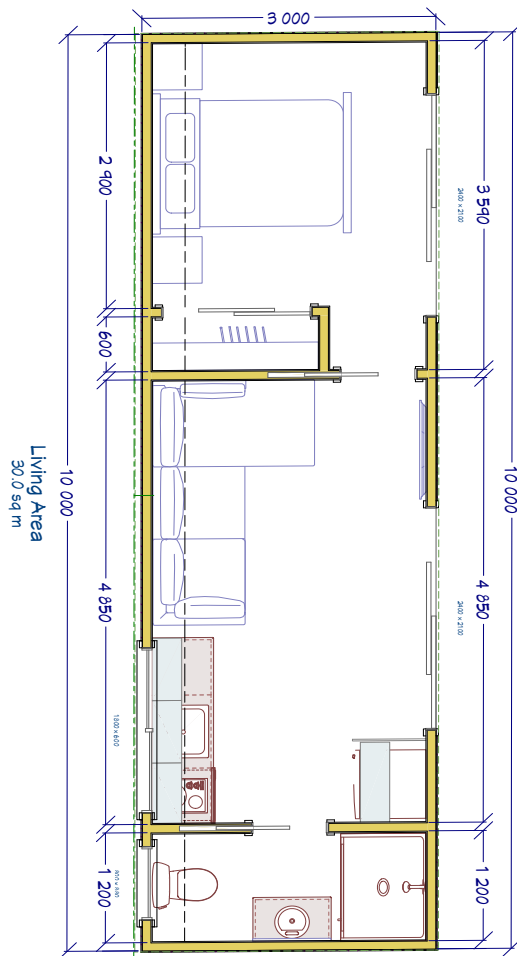


# Dreamwood Series - **Plan 9**

1 Bedroom - 30m<sup>2</sup>



## Features:

- Durable solid wood interior
- Ply & batten cladding
- Open plan
- Flat ceiling
- Transportable design
- Double glazed windows & doors



1x Lounge



1x Bedroom



1x Bathroom



1x Toilet

© Copyright Touchwood Solidwood Homes Limited

solid wood homes within your reach

**TOUCHWOOD**<sup>®</sup>

*Naturally*

[www.touchwoodsolidwoodhomes.co.nz](http://www.touchwoodsolidwoodhomes.co.nz)