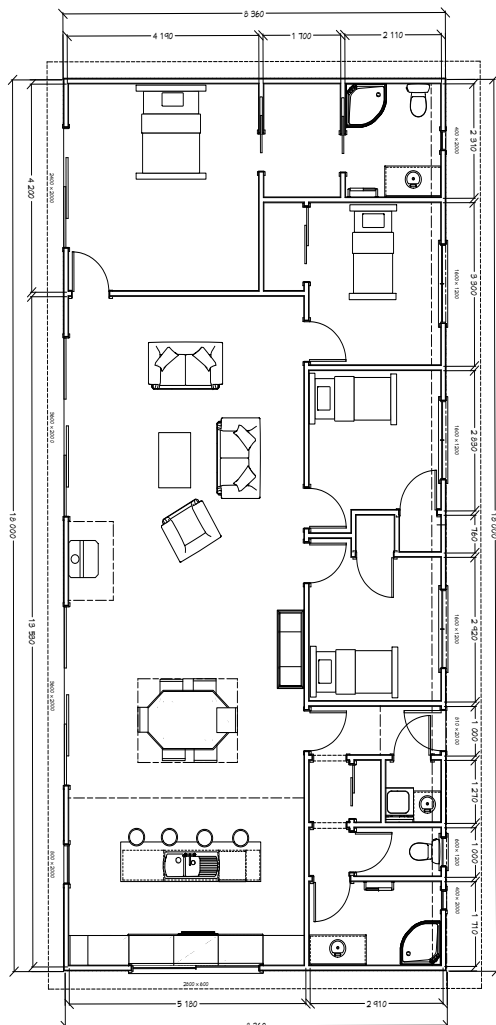


Dreamwood Series - **Plan 5**

4 Bedroom - 150m²



Features:

- Durable solid wood interior
- Timber weatherboard cladding
- Open plan living
- Raking ceilings
- Transportable design
- Double glazed windows & doors



1x Lounge



4x Bedrooms



2x Bathrooms



2x Toilets



1x Dining

TOUCHWOOD®

Naturally

© Copyright Touchwood Solidwood Homes Limited

solid wood homes within your reach

www.touchwoodsolidwoodhomes.co.nz